




PROMINENCE
ESTATES



RESIDENTIAL
PROPERTY EXPERTS

COVENTRY, WARWICKSHIRE
& LEAMINGTON SPA

SIR HENRY PARKES ROAD,
COVENTRY, CV4 8GJ

£2,100 PER CALENDAR

SIR HENRY PARKES ROAD



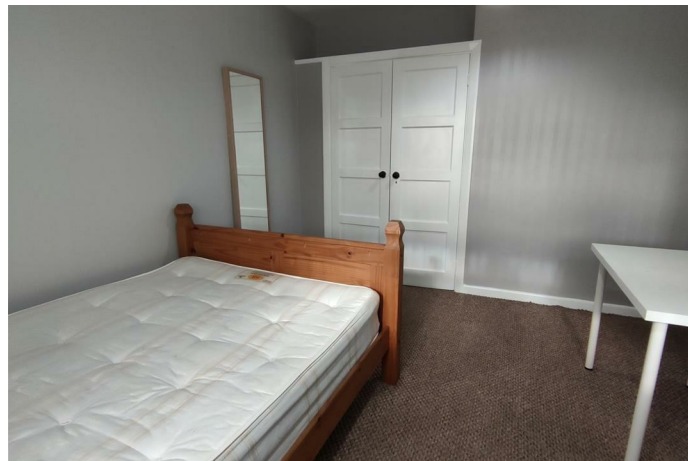

PROMINENCE
— ESTATES —

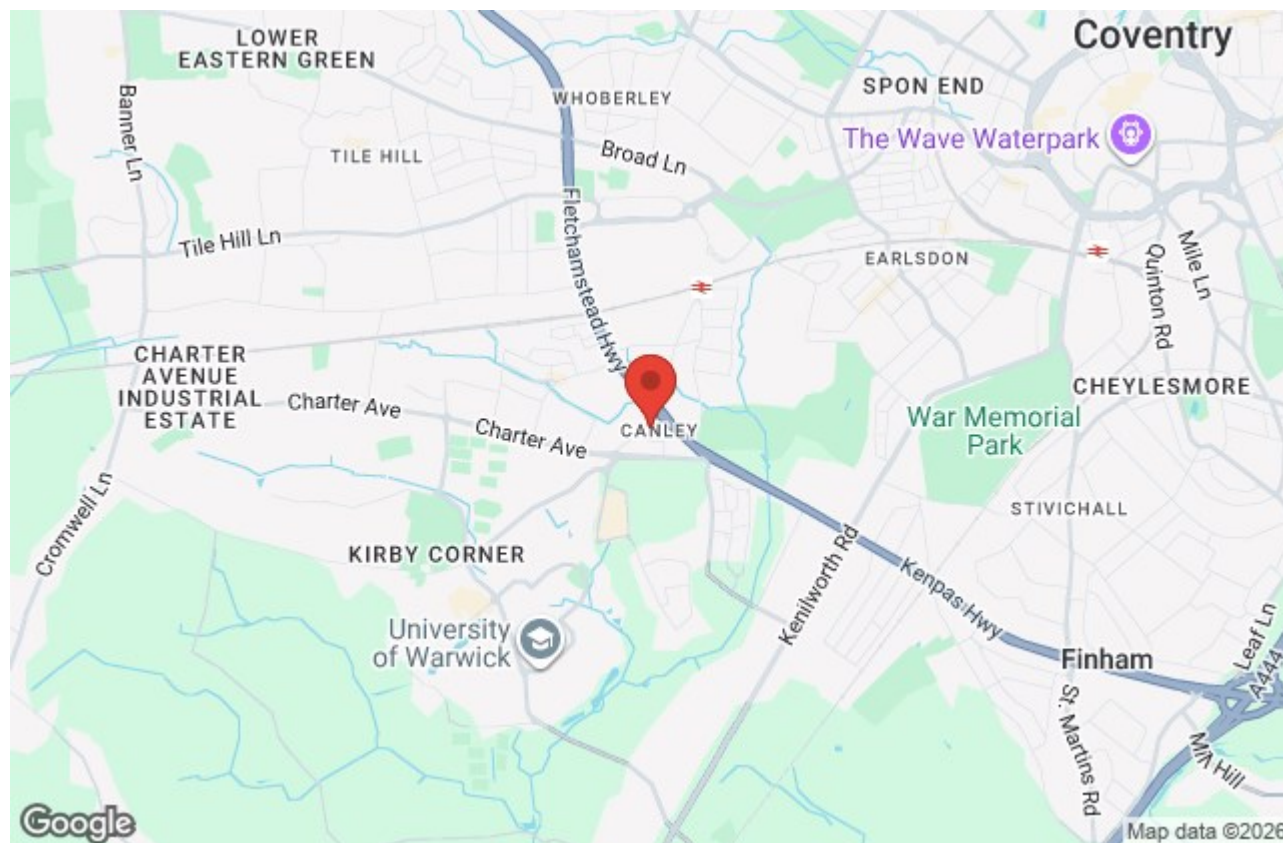
A spacious and well maintained four bedroom, two bathroom student property ideally located in the highly sought after Canley area of Coventry. The house comes fully furnished and is perfectly suited for student living, offering generous accommodation throughout. The property features a modern and sociable kitchen/dining room, providing an excellent communal space for cooking, dining, and relaxing.

This property offers an ideal balance of comfort, space, and location for students and is available from September 2026.

****Images Supplied By The Landlord****

Further benefits include side access around the property, adding practicality and convenience. The location is a major highlight, being within comfortable walking distance of the University of Warwick and Cannon Park Shopping Centre, which offers a range of shops, supermarkets, and amenities. Excellent bus routes are also available nearby, providing direct and easy access to Coventry City Centre.





Prominence Estates
5 Queen Isabels Avenue,
Cheylesmore,
Coventry,
CV3 5GE

02476 309 826
lettings@prominenceestates.com
www.prominenceestates.com


PROMINENCE
— ESTATES —